



GLOSA PERI GAIA



U delekta acide in histori de Glosa es u-ci; poli Glosa-pe proto gene plu grama ge-grafo in fo-boni Glosa ex uno-pe; ko qi mu e na ne pa komunika pre nu. Plus-co, poli-ci grama veni ex plu extra-Europa persona.

Ex kron a kron na gene plu komanda pro plu Glosa bibli ex plu bibli-komercia; qi supli plu bibli-do e bibli-bo; e plu-ci freqe tena plu verba "For export." Id es hedo amusa kron na gene nova ex plu persona qi pa merka alo lekto plu-la Glosa bibli. U reali excita sti de u-ci es; mu freqe veni ex plu Munda Tri landa; topo klu plu ofici-pe ergo infra plu fo anti-konditio.

Glosa gene docu e difusi in plura Afrika landa supra-toto in Tanzania, Nigeria, Uganda.

Afrika habe ma lingua de ali hetero landa-masa -- cirka 1,300 ge-dice per 400+ miliona persona. Seqe-co mu uti oligo inter tribu lingua, exempla; Arabi, Swahili, Hausa, Wolof, etc., plus pidgin e kreol. In Europa na habe nu poli eu ge-produce Skience e Tekno Textu bibli; qi pote gene facili ge-Glosa 1000; qi fu duce a tako developo de Afrika.

In UGANDA Sr. Onen Smith dura ergo forti publika e dona sko de Glosa in Uganda. An pa proto per dona-sko ad plu studenti; qi habe 18 + anua in an auto sko-do. Plus, an freqe visita plu hetero urba in Uganda, e dice de Glosa in mu sko-do. Nu Glosa gene docu in bi sko-do pro plu docu-pe, e in oligo ma-alti sko-do in oligo urba. Na ski de plu Glosa docu-pe in plura urba, inklude: Mpigi, Entebbe,



Arua, Gulu, Rukungiri, Mbala, Kampala e Masindi. Plus, plu Glosa-dice -pe es ge-spora in hetero Uganda urba.

GLOSA IN TAIWAN

Glosa progresi in Taiwan. Peter Morehead e Badi Chen duce u Glosa Stude Grega in Tainan; e Sa. Chiang Hui-i duce Glosa Stude Grega in Taipei. Na freqe gene plu komanda pro Glosa 1000 - Cina verba-bibli ex plu-pe e plu bibli-do in Taiwan e Hong Kong.

GLOSA IN USA

Paul Easton nu-pa versi ex Taiwan ad USA. An mu duce u Glosa Stude Grega in Minnesota Universita. Paul grafo "...Ci na habe poli persona kon interese in Glosa. Mi inklude fotokopi de plu lega pro UWSP Glosa Grega in na universita. Singu meno na publika "Glosa Nova" u-ci nova-grama fu es ge-grafo in English e Glosa."

Klaus Langkilde dura prepara stude info bibli pro plu neo Glosa docu-pe qi nu-fu proto docu Glosa in plu sko-do in Georgia.

GLOSA IN BRITAN

Juni 13, 1994 pe pa difusi u televisio programa de plu seqe de plu Euro-elekti. U po programa pa es de plu Euro lingua problema, e plu enormo suma de valuta ge-lose in translati e interpreti; --- e de Glosa, qi fu solv u problema. Nu na dura gene plu grama petitio info de Glosa, klu nu, po oligo setimana.

"LEARNING GLOSA IS FUN!"

THE BREVITY OF GLOSA

The brevity of Glosa is quite unique. Any addition to the vocabulary is unnecessary. Glosa 1000 is a complete language.

I recorded the Glosa 1000 words in my note-book, and find them delightfully simple but basic. I translated a piece of English into Swahili and Glosa; and really appreciated the delightful brevity of Glosa 1000.

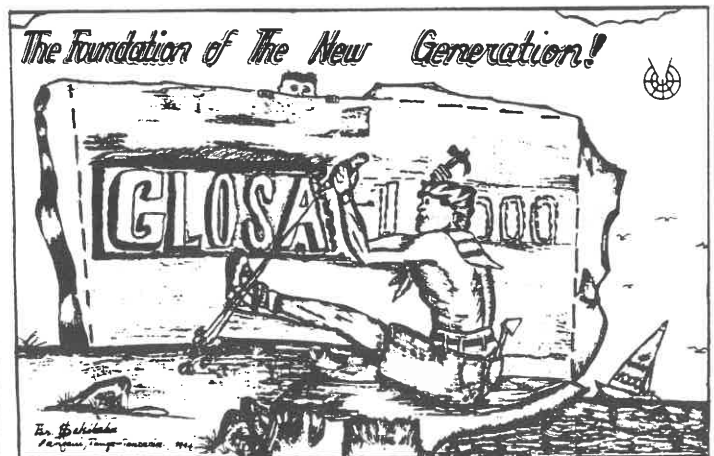
The method of expressing all kinds of Tenses by permutations of 4 2-letter words PA, NU, FU and DU is really wonderful. Another Glosa idea I find delightful is -CO = all I've just said. So that PO-CO means *after all that...*

It is so easy to learn Glosa1000. Imagine! After the 2nd lesson in 18 Steps to Fluency in Euro-Glosa I can write a letter, which is utterly impossible in any other language I know.

Below are some comparative examples of Glosa, English and Swahili.

Leonard Sekibaha

GLOSA	ENG.	SWAHILI
an,andro	ee, him his male, husband	yeye muwanamume yeye mume yake mume mume mwanamume
fe=femini	she her	yeye mwanamke yake mwanamke
id	it	hii, huu, ile, ule, kile
mi	I me my	mimi mimi yangu
tu	you your thou	wewe, ninyi yako, yenu wewe
na	we us our	sisi yako, yao yezu, zetu
mu	they them their	wao, vile(zi-i-wa) wao, zao yao kwao, tao



LEONARD SEKIBAHA

duce u Glosa Stude Grega in Tanga regio de Tanzania. Oligo membra de an grega es plu docipe; e mu nu kambio plu Glosa grama; e auxi difusi GLosa in Tanzania.

Leonard pa grafo bi kali kroma plakarda publik u Glosa. Epi u-ci pagina es u ge-pusi exempla de mo. Tu pote vide an hetero plakarda "Glosa in Afrika" epi fronta pagina de u-ci PGN.

Glosa	English	Swahili
-------	---------	---------

Number of words	7	20	35
Number of letters	14	64	152

NEO GRAM-AMI

Mi habe mo penta anua, Mi volu plu Glosa gram-ami,
Mi amo kolekti plu posta bileta.

Poli ami saluta

Alan Maddick, 233 Thomas Street, Hampton, Victoria, 3188, Australia.

TA! TA! TA!

Mo humidi di, termo-tem, no-tolera, ta termo!
No-facili grafo, ergo, alo klu puta, ta termo!
Nece ki ex u-ci deino furna-ka, ta ta termo!
Longi piro pedi-via, helio kako radia, ta ta termo!

Nu veni epi ripa, inter dendro, ta fresko!
Pusi venti, fluvi, flori fragra, ta ta fresko!
Eu-soni avi, aqa musika, fresko!
Ma dulce ci, ge-paci, ge-repara,
ta ta ta refresko!

Wendy Ashby

MI MENTA

Mi menta
ge blasto,
doxo-ra, puta-ra,
Pan enkefa akti-ra
Fluvi ab.
Menta ge-vaku.
Mi pa face menta vaku.
Fora.....osci fora,
hedo sub-ridi fora
in mi menta.

Paul Easton
Minnesota, USA.

ATENDE !

Epi grama epi pedi-lo
mi no-kura skope u Glosa verba
.....ATENDE.....
u Glosa verba kandi
kandi;
Homo homi centra, proxi infra gastro,
no-pote vide, sed id habe dina.
Id es dina.
U Glosa verba radia ex
e posi pe pote kapt u rai
Posi.....
.....ATENDE
Si Glosa es na terapi,
Si Glosa es na repara
Sura mu atende
Sura na nece proto
Lekto, grafo, audi, dice,
doxo Glosa.
E sura id fu
esce qod id fu es.

Peter Morehead
Tainan, Taiwan.

EX TAO TE CHING

Versi es kine de Tao
Cede es via de Tao
Infra Urani deka kilo ra
gene nati ex existe.
Existe gene rati ex non-existe.

U-ci es u Zheng Guo Lingua Proverba.
U-ci semani es; u pe fo-tako skope u ra,
sed u-la pe ne pote ski de u-la ra fo profunda.
Pe solo habe u no-profunda logi de u-la ra,
ka u-la pe kine tro tako.

Teknologi e Komunika

In Afrika plu kultura difere, e su-toto, plu lingua barira sto komunika. In pleisto plu etnika grupa, ski gene transmite solo inter plu intra-pe. U fo ge-limita inter-etnika komunika stop u cirkula de info. Id es famo; in Afrika pleisto viki-demo es ge-insula ex plu fonta de teknologi. Seqe-co, u-ci minus de info de sani, agrikultura, e generali eduka es fo gravi; e na nece uno-mode apo plu-ci barira; e sti u boni sani cirkula de info, praxi, skience, e medika-ski. U lingua barira es u mega sto-ra ad involve plu agri-pe e sti mu stop u certa traditio; e adopta plu ma moderni mode. U problema es ge-komplexi per miria de plu skience terma; qi pe ne pote translati pro plu loka eko-pe.

(Ex artikla in GATE, German Appropriate Technology Exchange.)

明日國際語今日學

FU-DI INTERNATIO LINGUA
NU-DI !

GLOSA
IN
TAIWAN

為什麼要學 Glosa ?

- ◎ 是一個國際輔助語 —— 幫助人類之間的溝通。
- ◎ 很容易學，沒有語法及無意義的字。
- ◎ 由1000個國際性拉丁文及希臘文字根組成。不但可以滿足日常生活的需求；Glosa更有助於享受知性之旅，探討科學、宗教、商業及政治.....

LEXI-LALI

SMILE The English word **SMILE** is quite a nice word naming a nice act. But both French and German treat a smile as a kind of weak or sub-laugh. The German for laugh is **LACHen**, and for smile **LACHeln**. The **L** in this word makes it into a diminutive, so the Germans think of a **LACHELN** as a little **LACHEN**.

The French repeat this idea, to laugh is **RIRE**; and to smile is **SOURIRE**. **SOUS** is French for **L. SUB**, under, so for the French too a smile is a sub-laugh.

Surely, a laugh is quite different from a smile. Of course nobody yet really understands what a laugh is. But one thing is certain; a real laugh is uncontrollable, and to be sharply distinguished from what we can call a social laugh -- a laugh which is demanded almost by convention in all kinds of situations; and which can be switched on and off in an instant.

A real genuine laugh cannot be switched on or off. It is an uncontrollable explosion of some sort of energy.

Back to English **SMILE**. To call it a sub-laugh seems to me ridiculous. There is of course a social smile, but here we are talking about the real smile, the outward expression of a deep internal happiness.

sMile is connected etymologically with **L. MIR-**, to look at in amazement and **admIRAtion**. The same root gives us **MIRacle**, something which causes amazement. The Indo European root is **MEI**, and the Greek for **sMile** is **MEI-dao**. The Sanskrit is **sMA-yate**. The prefixing or removal of an initial **S-** is a common event in the IE languages.

The ultimate root of these is **MEI**, to wonder at, be amazed. As a genuine unconscious **sMile** reflects a perpetual inner happiness and accompanying perpetual wonder, I suggest that in **Glosa** we use **SMI** for **SMile**. It goes back to Sanskrit.

If, however, you think that's a lot of rot, and a smile is merely a sub-laugh then keep to **SUB-RIDI**. At least with that you are in the very good company of French and German.

In **PGN 62** we listed some of the chief differences between Prof. Lancelot Hogben's original **Interglossa** and **Glosa**. I made some trivial changes, which it didn't seem worth while mentioning in the article. One however is Hogben's use of the Greek **SPHINCTRA** for tap, switch. The **SPHINCTER** is a term used in anatomy for the circular muscle which closes and opens the exit of bladder and anus.

I didn't like the clusters of consonants in the word — the **SPH** and **NCTR**, which may not be popular with non-europeans. It comes from the **G. SPHINGO**, to bind.

I prefer **VALVA** for tap; and **STI** from **STImulate** for switch. **STI** would do for both.

A few words, which are important, but might get confused are derived from a prolific IE root **SIMI**, like, **SAME**. As **L. SIMI** is cognate with **G. HOMO** (Note **G.** initial **H** for **L. S**, as in **SIX** and **HEXA. SERPENT** and **HERPES**.) It gives us many words in English, but for **Glosa** we want;

SIMI for as, like

SIMU for **SIMUL**, together, at the same time; **MU PA ARIVA SIMU**, they arrived together, = at the **SAME** time.

SIMULA, to simula-te, act like you are angry, happy etc.

ASIMILA, to **ASSIMILA-te**, take in food and build up the molecules into something **SIMILAR** to yourself.

I came across a quotation from Shakespeare the other day;

"I will after him", meaning follow, go after, using 'after' as a verb. We can of course do the same in **Glosa**;

"**MI FU POSTE AN**".

Shakespeare never bothered about parts of speech. If he wanted to use a noun as a verb he did so. Or any word in any other way than its usual mode. For example:

"But me no buts" he says, using *but* both as verb and noun in the same sentence.

Glosa must exploit this trick of using any word as any part of speech. It is a strangely liberating device.

Ron Clark

MEGA GLOSA

Oligo civi; qi petitio pro info de Glosa 1000; este mega no-facili de logi; Glosa 1000 pote translati plu "pluto" mega-diktionari de plu paleo lingua. Na panto-kron explika; Glosa 1000 representa mo kilo idea; e koresponde proxi a plu kefa-verba in Roget Tesaurus.

Anti-co, na kredi; multi civi fu amo gradu ad-in un enormo MEGA alo MIRIA-GLOSA. Glosa 1000 fu panto-kron resta u Centra maxi-gravi Glosa; e na expekta pleisto civi fu skende ana ex Mega Konfusi ad-in ma precise, e ma ekonomi Glosa 1000.

FACE TU AUTO MEGA GLOSA

Plu nova-papira artikla e nova reporta es ple de plu Latin e Greko verba. Usuali (sed ne panto-kron) mu es ma longi verba, freqe de tri mero---Pre-fix, Radi, Suf-fix. Te face un eu Glosa verba tena u prefix (si id habe u klari semani); e apo u kauda, u suffix, qi es freqe solo u no-nece mero gramatika. Exempla; in-TOXI-cate. U radi TOXI es u Glosa 1000 radi, u maxi importa mero de verba. Id signifi in English *poison*. Si tu puta IN- habe u funktio tena id; sed, klari TOXI solo dona u centra semani.

Panto verba qi fini ko -TION habe Latino origi. Usuali, id es sati de simpli apo u -TION; sed freqe, su-toto kaso plu brevi verba tu fu apo -N, e freqe u -ON exempla; in English verba STATION. Tu apo solo -N, dona STATIO.

Elekti u maxi brevi forma de lexi. Prefix+Radi Apo u kauda!

OLIGO PLUS EXEMPLA.

aberration esce Glosa..... ABERA

Te gene fini vokali exempla; in abdomen, face adjektiva abdominal = Glosa ABDOMINA.

acclimatize AKLIMA
accommodate AKOMODA
achieve ACEFA
admiration..... ADMIRA
alimenta ALIMENTA
bandage BANDAGE
barricade BARIKADE
benevolent BENEVOLU
camouflage KAMUFLAGE
capacious KAPACI
constitute KONSTITU
consume KONSUME
dignify DIGNI
charismatic KARISMA
disintegrate DISINTEGRA
docile DOCILI
deviate DEVIA
didactic DIDAKTI
diffident DIFIDE
conclusion KONKLUDE
dimension DIMENSIO
expostulate EXPOSTULA

PLU MUSIKA TERMA pro Mega Glosa

ANDANTE, meso-lento, ex. Italiano.

ANDA, ki

ALLEGRO, fo hedo, L. dona Anglo ALACRIty.

ADAGIO, lento.

SPIRITOSO, vivace. PRESTO, rapidi.

PRESTISIMO, fo-rapidi.

PIANO, qietu. PIANISIMO, fo-qietu.

FORTISIMO, fo-soni.

BRIO, vigo. KAPRICIOSO, vivace.

GLISANDO, glisa. STAKATO, fo-brevi.

KRESCENDO gradualu gene ma-soni.

DIMINUENDO, lento gene mei-soni.

TREMOSO, tremulo. ACELERANDO, accelera.

Oligo Glosa-pe dice; mu senti no-facili de Glosa English poesi. Mo stude-pe dona mo exempla; an volu translati u poema ex William Wordsworth;

I wandered lonely as a cloud
That floats on high o'er vale and hill,
when all at once I saw a crowd
A host of golden daffodils.

An pa tenta translati singu verba ad-in koresponde Glosa 1000 verba. E an pa gene u tristi komika efekti.

Nu, mali-fortuna mi ne es u poesi-pe, sed mi ski; id es no-posi de translati ali poema in mo lingua ad-in poema in hetero lingua. Proxi panto-kron pe nece re-komposi u poema.

Pleisto verba de supra poema habe Germani origi; e, anti mi nuli-kron pa vide u Deutsche translati; mi este sura; id ki fo bene.

Anti-co, Glosa es u klasika Latin e Greko lingua; e pe nece adopt u difere mode.

Id es u maxi kali poema; e panto Anglo-pe ski id fo bene; seqe-co, kron na stude-pe lekto an Glosa versio an akusti u fo qietu ami Anglo versio para-susura id; e mi kredi; u-ci sio noku u musika, ritmi de klu u fo-boni translati. Si an tenta u translati; mi proposi; an nece taci un Anglo versio. Id es u paleo ami, e homo pan paleo ami; habe mega dinamo epi na. Sed mi este sura; plu kali senti ge-voci ana per plu-la Saxoni verba; pote gene re-voci per Glosa Latin e Greko.

Qe fu ali-pe tenta id; intra alo extra Glosa 1000? Mi auto reakti bene ad oti-titula de poesi; sed mi gene u fo ma mega excite ex reali kosmo ge-sensi per oti e oku, nudi alo ge-lenti. Mi este un aqa autumnna arane e avi musika es mega ma stimula de u sika reti de lexi.

Ne timidi! Koragio! Experimenta!

Ignora plu voci de agoni de ge-gramatika ami!

Auxi mu apo mu prejudika!

Ge-libe per Glosa, multi de mu fu gene

Glosa-mania!

Ron Clark

QO DE ENGLISH ? ALO ENGLIK? ALO NUKLEAR ENGLISH ? ALO.....

Oligo Glosa ami in England dice a na; mu freqe enkontra plu civi; qi reakti a Glosa ko "Well, what about English?" Usuali mu es plu-la civi; qi ski pusi de plu xeno lingua, e klu mei de English. In panto na enkontra ko plu media-pe; na nuli-kron pa gene u-ci reakti. Anti-co, na adres u-ci pusi artikla a plu-la ami; qi sufere u-ci reakti. (Ad u-ci punkta mi nece dic a tu u fo sti-ridi pusi enkontra na pa gene; kron na pa du publika Glosa in "London Language Show" in Barbikan; plu anua retro.

Mi pa du sta ante Glosa kabina; e pa du dice a plu multi pasa-pe per "Can I interest you in the International Language Glosa?" Proxi panto-pe pa sto; e pa bali a na oligo qestio. Sed, ad u-ci okasio tri juve andro pa du pasa; e mi tako pa qestio mu. Tri pusi nasa iso-kron pa klina a tegu; e per mo voka mu reakti; "We teach English!"; holo minus ali speci expresio, e mu pa pasa ex na bio. Na ne pa pote sto se explode ad-in u mega ridi. Sed po-co na pa akorda; reali, id pa es u fo-tristi acide. Tri ge-klude menta ne es komika; mu es u tragedi. E mu es plu doci-pe! Mu pove studenti!

Pe ski ex mega tem; plura seriose doci-pe pa tenta establi u speci World English; sed plu-pe; excepti plu-la persona kon egotisti interese in u-la idea; ski; id es u no-posi sonia.

Panto paleo lingua homo English, Français, Deutsch etc, es tro ple de lingua rude-ma de kilo-amua; e singu neo generatio gene lava u cerebra ex plu parenta e doci-pe; e panto-na ne pote gene libe ex lingua konfusi de histori.

English servi komo Munda Lingua peri-mu; anti id es no-facili de gene eu ski de id; kausa pre-Glosa pa es zero alo-lingua.

Multi civi nu ski; World English frakti. Mu ne pote logi u speci English mu enkontra in India e Uest Afrika, freqe in Britan auto e Nord Amerika.

Te doci eu-English es sati no-facili; klu kron u doci-pe es u nati Anglo-pe, speciali ge-eduka, e doci a plu pusi klasi de plu fo ge-motiva stude-pe.

Anti-co in pleisto kaso, in plu Filipino, India, alo Nigeria es fo mega klasi de fo no-ge motiva stude-pe ge-doci ex plu-la doci-pe; qi pa gene mu English in plu simi mali konditio.

Un English editio de un India nova-papira uti exempla: rail roko (rail stop ergo), makan (domi) kapra (plu vesti), roti (sito); e plu numera ...krore (deka milion) m lakh (100,000).

In plu speci English u loka norma vokabulari pote inklude plu kilo de plu loka Afrika alo India verba.

Na ne dice ci de oligo pluto-pe, sed de plu agri-pe in rura e plu ergo-pe in urba, de plu viki-pe; ex qi u reali ekonomo de landa pende.

Oligo pe pa proposi plura difere mode te solve u-ci problema.

Prof. Takao Suzuki dice; id es u lose de tem de tenta doci eu English ta generali in Japan; vice-co, pe debi doci u ge-simpli speci, Englik, ne ge-basi epi Englanda English.

Prof. Randolph Quirk, linguisti e generali editora de fo-mega English Gramatika Bibli proposi; pe pote evita u frakti; si pe produce u speci nuklea English pro internatio uti.

Nuklea English sio habe u centra de stru e vokabulari. Id nece bali panto-ra no-nece ex. Un exempla an avanti es u kaso de plu "tag-qestio"...havnt you, isnt it, doesnt it, etc. etc, qi es fo no-facili pro plu xeno-pe; e simpli reduce mu a mo simpli forma "Right?" alo "O.K.?" (in Glosa = "Qe?").

Te succede Nuklea English nece es fo simpli; e su-toto id nece pote developo fo-facili ad-in ma-norma English pro ma-boni uti. Plus-co, plu nati-Anglo-pe sio nece gene ski de id!

Robert Burchfield, cefa redakto-pe de Oxford English Dictionary, kredi; plu-ci skema ne pote succede, kausa; English simpli nu frakti ad-in poli speci English; qi es pro alelo no-logi; homo Klasika Latino pa frakti ad-in plu Romance Lingua de...France, Italia, Espaniol, Portugese e Romania; e u Germani grupa pa frakti ad-in Nederlanda, Sverige, Norvege, Danemark e English. In Singape pe dice Singlish!

Sed nu, na habe GLOSA 1000 e MEGA GLOSA; singu verba de qi acide in panto Euro-lingua plus panto hetero gravi lingua epi holo Gaia.

Para-co, kron Wendy pa visita Brussels meno 9 1993 fe pa ki la ge-prepara pro dice France-lingua. Sed, fe ne pa dice Français alo English. Fe pa uti Deutsche maxi freqe.

Plus, multi minori natio e tribu este; mu nati lingua representa mu nati kultura; e a nu pleisto-pe ne volu cede u-ci. Solo eu-eduka pote apo u-ci dina impedimenta a progresi.

Ron Clark

ZOA KO-OPERA

U gradu a qi plu membra de u speci fu ko-opera pende ex mu fisika qalita e u natura de peri-lo. Exempla mo biologisti reporta; in Kibale Foresta in Est Afrika, plu cimpanze freqe kolekti sito in plu grega de tri alo tetra individu. Plu membra de grega separa; e ki ab in difere direkti.

Kron mo zoa detekti u dendro qi habe frukti, id voci a plu hetero zoa. Plu dendro ko frukti ne es freqe; sed u-ci ne sti no-facili pro plu cimpanzi; kausa mu pote gresi e vaga epi pedi-lo.

Kontra-co, plu Orangutan akti solo. Mu reali habe tetra manu; qi es ge-adapta pro tena plu rami. Plu Orangutana ne gresi bene epi pedi-lo; ka-co id es ma-sofi pro un Orangutana de tena pro se ali frukti an detekti in dendro.

ALTRUISMO.

Feno, u zoa demonstra altruismo; kron id akti pro profito de plu hetero membra, vice ex auto-interese.

Exempla; in plu formika e api, solo u fe-regi bali plu ova; e pleisto api in api-do es plu fe-api; qi nuli-kron reproduce. Qo es u profito a societo.

Mo posi explika es; un an-parenta es haploid, i.e. habe solo mo de singu speci kromosoma. Id habe solo u semi de u ple numera de plu kromosoma.

U-ci signifi; plu fili habe solo tri su tetra de mu gena-fa in komuni. Plu sibi habe solo mo semi de mu gena in komuni ko mu plu parenta; id posi sti ma-eu u pote de plu ergo-pe te dona nati a plu sibi vice plu fili.

PLU KOMUNALI GRUPA

Un exempla de u-ci es ge-dona per glandi-vora Pikus. Mu stora plu glandi in fora; mu face in dendro. In Kalifornia plu-ci Pikus eko in plu grega de cirka mo-penta avi. Singu grega alexi u stora ex plu avi; qi ne es plu membra de u-la grega.

Solo plu certa membra de grega pote reproduce; e mu habe plu komuni sposa. U-ci es rari in plu avi. U grega habe ma fili mo grega de un usuali bina. In u-ci praxi, plu an es usuali fratri; e plu fe es usuali sorori.

In mega grega es plura no-reproduce avi; sed mu auxi kura plu infanti de plu reproduce-avi.

KOMUNITA BIO

Panto-pe nu ski; de u mira komunita bio de Formika.

E de u-la de Apis. Nu, feno, u famili de plu arakni praxi u-ci profito idea.

Usuali na doxo; u bio de arakni es u solo. Sed, nu, un Amerika zoologisti pa detekti un arakni; qi forma u mega komunita; qi habe mo tela. U-ci arakni eko in Ekuadora.

Sa. Leticia Aviles de Harvard Universita mu stude u-ci interese grupa. Fe doxo; mu es de u neo speci de Tapinillus genus.

Mu plu reti, tela ne es homo un ordinari norma plati tela; sed id habe tri dimensio ge-texi peri fini de dendro-rami. U komunita inklude plu matura arakni de ambi sexu plus plu juve arakni; qi habe plu difere eva.

U-ci Tapinillus speci es un idio speci. Aloenzima analisi demonstra; eksklude oligo an-arakni; panto individu in nido es plu sibi; mu es plu fili de mo bina; homo u kaso de plu sociali insekti.

Mo fe-arakni produce panto juve-zoa homo plu formika. Es multi an e fe- arakni in nido; qi ne reproduce.

U-ci arakni fu kapti e vora u pusi preda. Anti-co, u grega de plu matura arakni ko-opera te cide u preda; e vora id simul. Mu kura pro plu juve arakni e ova proxi centra nido. Plu juve arakni lice vora u preda solo po plu matura fini. Plu matura zoa de ambi sexu ko-opera te repara u nido.

KIROPTERA OBSTETRI-FE

(English Bat-midwives)

Oligo mamali auxi alelo de dona nati. Nu-pa pe pa detekti u Kiroptera; qi auxi u kompanio.

Thomas Kunz of Boston Universita pa du skope u koloni de frukti-vora Kiroptera (Pteropus rodri-gensis) in Florida. Id eko solo epi mikro nesia... Rodrigues proxi Mauritius. Solo cirka 350 individua survive. Tem tri horo Kunz e plu kon-ergo-pe pa du skope mo de plu fe-kiroptera dona nati.

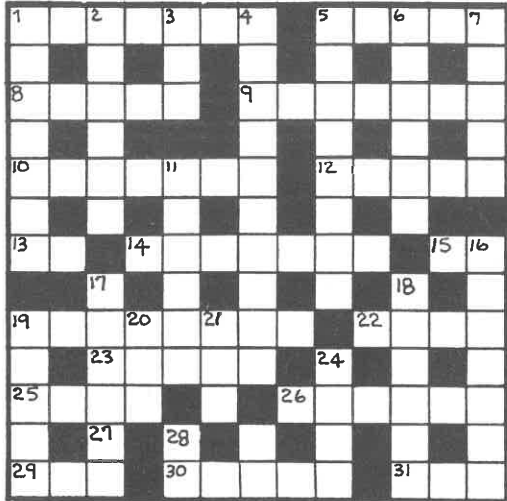
U pregna fe-zoa pa du tena u rami per plu ungu epi fe brevi-digi ko plu pedi pende kata. Plu zoologisti pa detekti; si u matri pa muta fe positi; e seqe-co pa pende kefa kata; u fe-kompanio pa pende se plu pedi kata ante matri; te monstra a fe u maxi-boni positi. U matri pa mimi fe.

Un auxi fe-zoa pa liko e masage un anus e genita regio de matri. Kron fe babi pa proto ki ex; fe pa puri id plus; e pa auxi id repti a matri teli; tende id pote proto nutri se.

U babi pa veni ex plu pedi prima; qi es rari. Un auxi de u-la hetero zoa pa es fo importa.

Pe nuli kron pa vide u-ci inter-auxi pre nu; sed, posi no multi civi pa vide ali kiroptera dona nati; kausa plu fe-zoa kripto se ad u-ci risiko tem. Sr. Kunz kredi; u-ci inter-auxi es posi freqe inter plu koloni Kiroptera.

KRUCI-VERBA 67



Horizontali

- 1 Seka-ru. 7
- 2 Metali valuta. 6
- 3 No-paleo. 3
- 4 Bali id ex soma. 10
- 5 Metri. 8
- 6 Forma. 6
- 7 Mei de poli. 5
- 11 Centra mero. 6
- 16 Minus bio-ma. 28
- 17 Un este qi moti. 6
- 18 Fo ge-vexa. 6
- 19 Kine a. 5
- 20 Non-anti. 3
- 21 Kurva ana plu labia. 3
- 24 Tako kine. 4
- 27 Pre nu. 2
- 28 Brevi mekani.

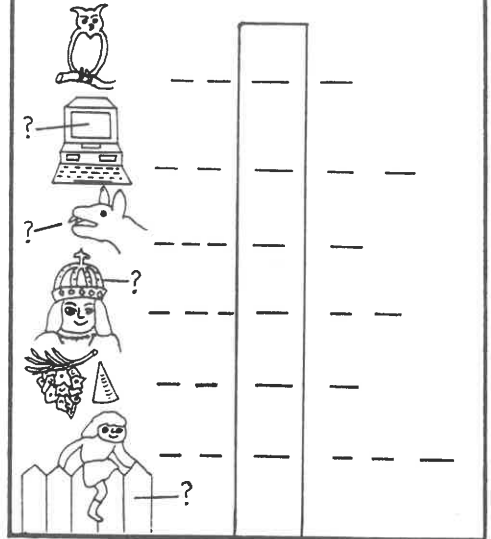
ENIGMA PAGINA

Vertikali

- 1 Proto. 7
- 5 Para bi. 5
- 8 No-tako. 5
- 9 Vide mo alo plu in turi.
- 10 Sti ma longi.
- 12 Mega grega civi. 5
- 13 Pronomina. 2
- 14 Religio-do. 7
- 15 Existe. 2
- 19 Viole klima. 8
- 22 No-pluto. 4
- 23 Greko vista. 5
- 25 Sta. 4
- 26 Heredi. 6
- 29 Exakti homo. 3
- 30 Defende, in andro-nima. 5
- 31 Ki, viagia. 3

ELEKTI U LITERA

Grafo plu nima de 6-ci ra. Plu litera in kolonni fu dona a tu u mero vesti.



Vertikali



pusi stagna



trompeta violina



baci



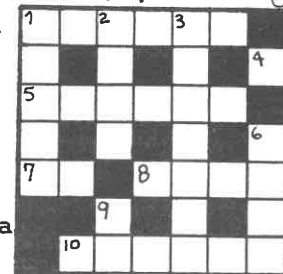
?- brosa

Horizontali

! . ? - . ?
exklama . questio

? -pe proto-pe

PIKTO-VERBA 59



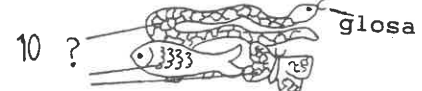
ki ex ki ? teka. teka.



U gina --- fe trika.



kuko-an servi-?



glosa

Grafo u Glosa verba infra singu English verba laevo. Nexi mu kon alelo te face hetero Glosa verba dextro.

EXEMPLA:

MANKIND + KILL = Killing of a human being.

H O M I + C I D E = H O M I C I D E

EAR + LOOK AT = Instrument for examining the ear.

JOIN + WING = Damsel fly

PEOPLE + WRITE = Writing about and study of peoples, population.

PRE SOLUTIO: Horo-skope, re-tena, gastro-poda.

HISTORY BEHIND GLOSA

This booklet gives an outline of events which led up to the development of Glosa. Price 25p + 25p postage in Europe. + 60p " to all other countries.

PLU GLOSA NOTA

Preci inklude posta preci:

- 6 PGN intra Britain £5-40
- 6 PGN " plu hetero Euro-landa..... £6-30
- 6 PGN " USA, Afrika, Kanada, India.(aero) .£10-20
- 6 PGN " " " ..(mari) ..£7-20
- 6 PGN " Australasia(per aero)... £11-10
- 6 PGN "(per mari) ... £7-20

Place bali PGN abona-valuta in £ Sterling a:
Glosa, P.O.Box 18, Richmond, Surrey,
TW9 2AU. Britain.

PLU PRE SOLUTIO: Kruci-verba 66 H: 1, papilio. 5,prate. 8,via. 9,giganti. 10, Tigri. 11,naviga.14,limita. 15,arena.17, kristali. 21,fru(enjoy).22,idea.23,atro. 24,ple. 26,ekino. 27,superna.28,anatema. 29,ovari. V: 1,pagina. 2,piga-ve. 3, lanuga (down,feathers).4, Ovis. 5,patri. 6, Anguila (eel). 7, evita. 12,ara. 13, intra. 16,protesta. 18,Skorpio.19,itera. 20,litera. 21,femina. 24,parka. 25,kore. PIKTO-VERBA 58. H: 1, elasti. 5,pektina. 6,nu. 7,pomi. 9, Aqila (Eagle). V: 1, Espania. 2, arka. 3, tripoda. 4, Galina. 8, ci. ELEKTI U LITERA: taBla, lEkto, bi Tri, bUrSa, feLis, kAsea.= BETULA (Birch)